

# UNDERSTANDING THE IMPACT OF Chronic Kidney Disease (CKD)



## What Is CKD?

CKD means your kidneys are damaged and can't filter blood the way they should. Most patients with advanced CKD require dialysis or kidney transplantation.<sup>1</sup>



**91,761 people**

...are on a **waitlist** in the United States for a kidney alone or kidney-pancreas transplant.<sup>2</sup>



**5 years**

The average wait time for a **deceased donor kidney transplant** is 5 years, but can vary greatly.<sup>2</sup>







**4 hours, 3x per week**

Average time commitment required for **hemodialysis**.<sup>3</sup>



## How do you know if you have kidney disease?<sup>1</sup>

Most people do not know they have kidney disease so it's important to get tested to find out how well your kidneys are working. **Talk with your health care provider about getting tested for kidney disease if you have any any of the following:**

-  Diabetes
-  High Blood Pressure
-  Heart Disease
-  Family History Of Kidney Failure



**5-10 years**

The average **life expectancy** on dialysis is 5-10 years, however, many patients have lived well on dialysis for 20 or even 30 years.<sup>3</sup>



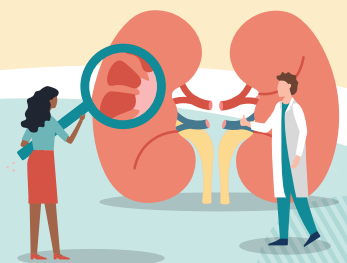
## Want More Information About Kidney Disease?

Learn More From Our Trusted Partners:

American Association of Kidney Patients  
[AAKP.org](http://AAKP.org)

American Kidney Fund  
[KidneyFund.org](http://KidneyFund.org)

Kidney Donor Conversations  
[myKDC.org](http://myKDC.org)



National Kidney Foundation  
[Kidney.org](http://Kidney.org)

PKD Foundation  
[PKDcure.org](http://PKDcure.org)

### References

1. National Kidney Foundation. Chronic kidney disease (CKD) - Symptoms, causes, treatment. <https://www.kidney.org/atoz/content/about-chronic-kidney-disease> Accessed July 25th 2022.
2. <https://optn.transplant.hrsa.gov/data/view-data-reports/national-data/#> Accessed June 2022.
3. National Kidney Foundation. Dialysis. 2015. <https://www.kidney.org/atoz/content/dialysisinfo>. Accessed August 26, 2019.

The information provided through NephU is intended for your educational benefit only. It is not intended as, nor is it a substitute for, medical care, advice, or professional diagnosis. Users seeking medical advice should consult with a health care professional. ©2022 Otsuka Pharmaceutical Development & Commercialization, Inc., Rockville, MD. July 2022 US.CORP.X.21.00891